

Standard Socket

KT No. & D1

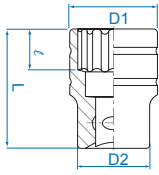


4330MR

4330SR

1/2"

- Metric-DIN 3124, ISO 2725-1
- Inch-ANSI / ASME B107.1



KT NO.	mm	D1 mm	D2 mm	ℓ mm	L mm	⚖️	📦
433008MR	8	13.2	23.3	7.0	38	57	10 / 200
433009MR	9	14.0	23.3	7.0	38	60	10 / 200
433010MR	10	15.0	23.3	8.0	38	58	10 / 200
433011MR	11	16.4	23.3	8.0	38	58	10 / 200
433012MR	12	17.8	23.3	9.0	38	60	10 / 200
433013MR	13	19.0	23.3	10.0	38	60	10 / 200
433014MR	14	20.4	23.3	11.0	38	61	10 / 200
433015MR	15	21.6	23.3	11.0	38	62	10 / 200
433016MR	16	22.5	23.3	11.0	38	63	10 / 200
433017MR	17	24.0	23.2	12.0	38	66	10 / 200
433018MR	18	25.2	23.2	13.0	38	66	10 / 200
433019MR	19	27.0	23.2	13.0	38	73	10 / 160
433020MR	20	27.9	23.2	13.0	38	86	10 / 160
433021MR	21	28.9	23.2	14.0	38	97	10 / 160
433022MR	22	30.2	24.0	15.0	40	99	10 / 160
433023MR	23	31.2	25.0	15.0	40	99	8 / 160
433024MR	24	32.1	26.0	17.0	42	113	8 / 160
433025MR	25	33.4	27.0	17.0	42	125	8 / 160
433026MR	26	35.0	28.0	17.0	42	130	6 / 120
433027MR	27	36.6	28.0	19.0	42	135	6 / 120
433028MR	28	37.8	30.0	20.0	42	151	6 / 120
433029MR	29	39.0	30.0	21.0	44	169	6 / 120
433030MR	30	40.0	29.5	21.0	44	169	6 / 120
433032MR	32	42.5	30.0	23.0	44	173	6 / 120
433033MR	33	43.0	30.0	24.0	46	217	6 / 96
433034MR	34	45.0	30.0	24.0	46	231	6 / 96
433036MR	36	47.0	33.0	24.0	46	238	6 / 96

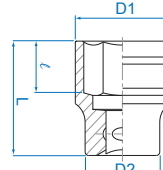
KT NO.	inch	D1 mm	D2 mm	ℓ mm	L mm	⚖️	📦
433010SR	5/16	13.2	21.8	7.0	38	55	10 / 200
433012SR	3/8	15.0	21.8	7.0	38	59	10 / 200
433013SR	13/32	15.0	23.3	7.0	38	58	10 / 200
433014SR	7/16	16.4	23.3	8.0	38	60	10 / 200
433015SR	15/32	18.0	23.3	8.0	38	62	10 / 200
433016SR	1/2	19.0	23.3	10.0	38	62	10 / 200
433018SR	9/16	20.4	23.3	11.0	38	62	10 / 200
433019SR	19/32	21.6	23.3	11.0	38	64	10 / 200
433020SR	5/8	22.5	23.3	11.0	38	62	10 / 200
433022SR	11/16	24.0	23.2	12.0	38	70	10 / 200
433024SR	3/4	27.0	23.2	13.0	38	83	10 / 160
433025SR	25/32	28.0	23.2	13.0	38	85	10 / 160
433026SR	13/16	28.6	23.2	13.0	38	95	10 / 160
433028SR	7/8	30.2	24.0	15.0	40	102	10 / 160
433030SR	15/16	32.6	26.0	17.0	42	112	8 / 160
433032SR	1	34.8	26.8	17.0	42	130	8 / 160
433034SR	1-1/16	36.6	28.0	19.0	42	135	6 / 120
433036SR	1-1/8	39.0	30.0	21.0	44	160	6 / 120
433038SR	1-3/16	40.0	29.5	21.0	44	169	6 / 120
433040SR	1-1/4	42.5	30.0	23.0	44	173	6 / 120
433044SR	1-3/8	46.0	33.0	24.0	46	248	6 / 96

4335MR

4335SR

1/2"

- Metric-DIN 3124, ISO 2725-1
- Inch-ANSI / ASME B107.1



KT NO.	mm	D1 mm	D2 mm	ℓ mm	L mm	⚖️	📦
433506MR	6	12.0	23.3	7.0	38	53	10 / 200
433507MR	7	12.6	23.3	7.0	38	52	10 / 200
433508MR	8	13.2	23.3	7.0	38	61	10 / 200
433509MR	9	14.0	23.3	7.0	38	59	10 / 200
433510MR	10	15.0	23.3	8.0	38	60	10 / 200
433511MR	11	16.4	23.3	8.0	38	60	10 / 200
433512MR	12	17.8	23.3	9.0	38	61	10 / 200
433513MR	13	19.0	23.3	10.0	38	63	10 / 200
433514MR	14	20.4	23.3	11.0	38	63	10 / 200
433515MR	15	21.6	23.3	11.0	38	66	10 / 200
433516MR	16	22.5	23.3	11.0	38	64	10 / 200
433517MR	17	24.0	23.2	12.0	38	68	10 / 200
433518MR	18	25.2	23.2	13.0	38	75	10 / 200
433519MR	19	27.0	23.2	13.0	38	86	10 / 160
433520MR	20	27.9	23.2	13.0	38	95	10 / 160
433521MR	21	28.9	23.2	14.0	38	97	10 / 160
433522MR	22	30.2	24.0	15.0	40	105	10 / 160
433523MR	23	31.2	25.0	15.0	40	118	8 / 160
433524MR	24	32.1	26.0	17.0	42	138	8 / 160
433525MR	25	33.4	27.0	17.0	42	141	8 / 160
433526MR	26	35.0	28.0	17.0	42	158	6 / 120
433527MR	27	36.6	28.0	19.0	42	161	6 / 120
433528MR	28	37.8	30.0	20.0	42	162	6 / 120
433529MR	29	39.0	30.0	21.0	44	199	6 / 120
433530MR	30	40.0	29.5	21.0	44	214	6 / 120
433532MR	32	42.5	30.0	23.0	44	236	6 / 120
433533MR	33	43.0	30.0	24.0	46	227	6 / 96
433534MR	34	45.0	30.0	24.0	46	231	6 / 96
433536MR	36	47.0	33.0	24.0	46	248	6 / 96
433538MR	38	49.0	34.0	25.0	50	241	6 / 60
433539MR	39	50.0	34.0	25.0	50	240	6 / 60
433541MR	41	53.0	36.0	27.0	53	284	6 / 36
433546MR	46	59.0	40.0	30.0	58	500	4 / 32

KT NO.	inch	D1 mm	D2 mm	ℓ mm	L mm	⚖️	📦
433510SR	5/16	13.2	21.8	7.0	38	60	10 / 200
433512SR	3/8	15.0	21.8	7.0	38	58	10 / 200
433514SR	7/16	16.4	23.3	8.0	38	60	10 / 200
433515SR	15/32	18.0	23.3	8.0	38	63	10 / 200
433516SR	1/2	19.0	23.3	10.0	38	61	10 / 200
433518SR	9/16	20.4	23.3	11.0	38	61	10 / 200
433519SR	19/32	21.6	23.3	11.0	38	65	10 / 200
433520SR	5/8	22.5	23.3	11.0	38	60	10 / 200
433522SR	11/16	24.0	23.2	12.0	38	67	10 / 200
433524SR	3/4	27.0	23.2	13.0	38	87	10 / 160
433525SR	25/32	28.0	23.2	13.0	38	96	10 / 160
433526SR	13/16	28.6	23.2	13.0	38	91	10 / 160
433528SR	7/8	30.2	24.0	15.0	40	102	10 / 160
433530SR	15/16	32.6	26.0	17.0	42	118	8 / 160
433532SR	1	34.8	26.8	17.0	42	143	8 / 160
433534SR	1-1/16	36.6	28.0	19.0	42	167	6 / 120
433536SR	1-1/8	39.0	30.0	21.0	44	163	6 / 120
433538SR	1-3/16	40.0	29.5	21.0	44	214	6 / 120
433540SR	1-1/4	42.5	30.0	23.0	44	226	6 / 120