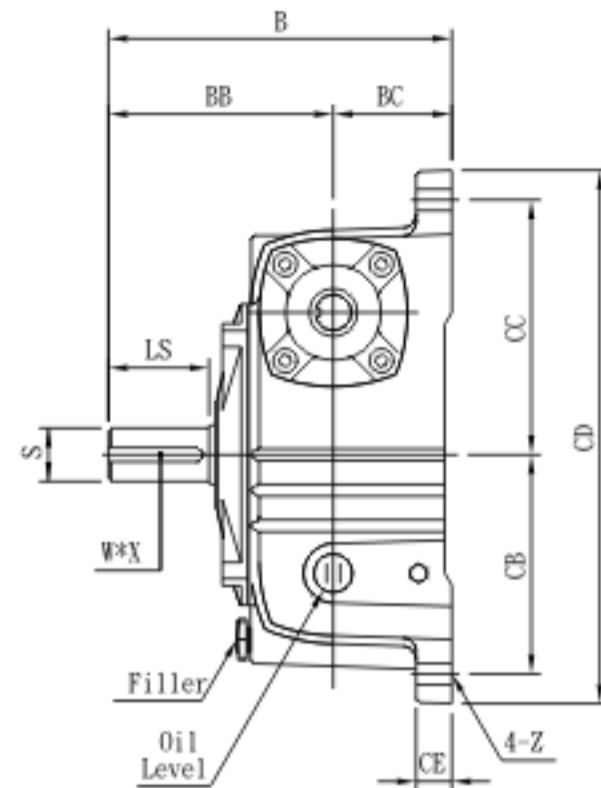
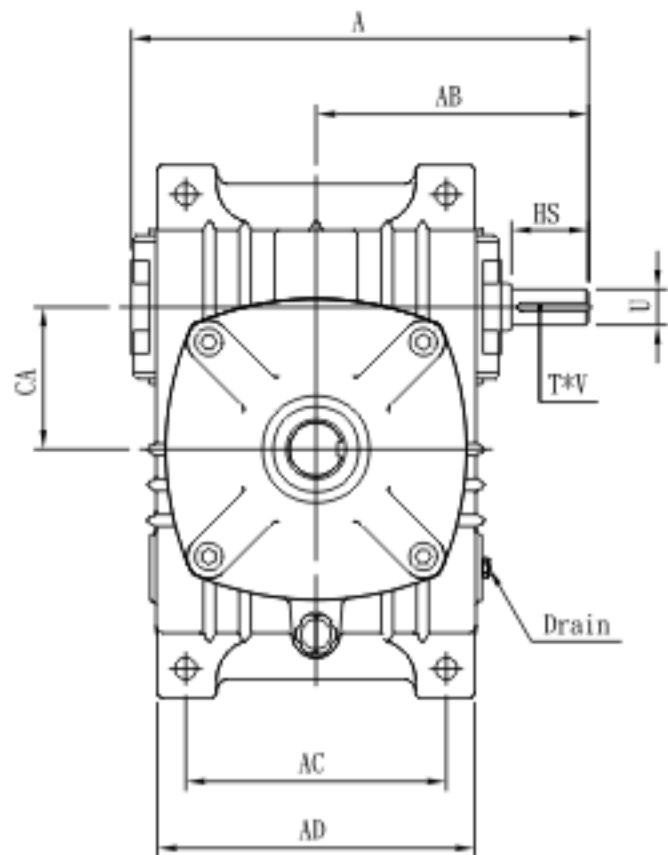


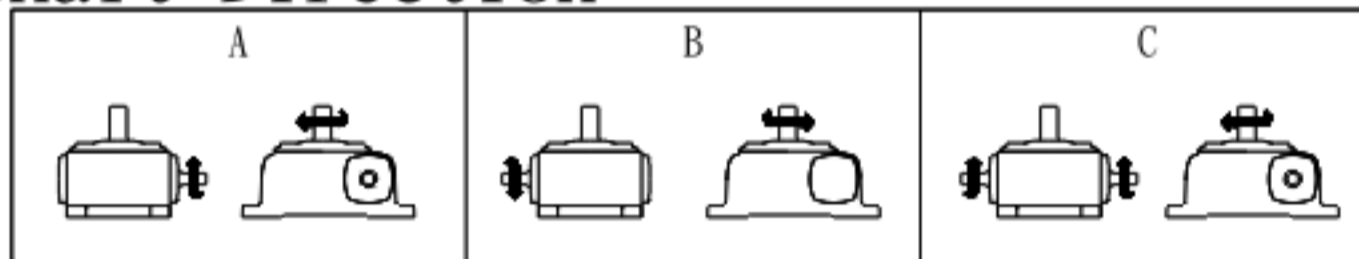


Model : ESS

**CHENTA GEAR** SPEED REDUCER



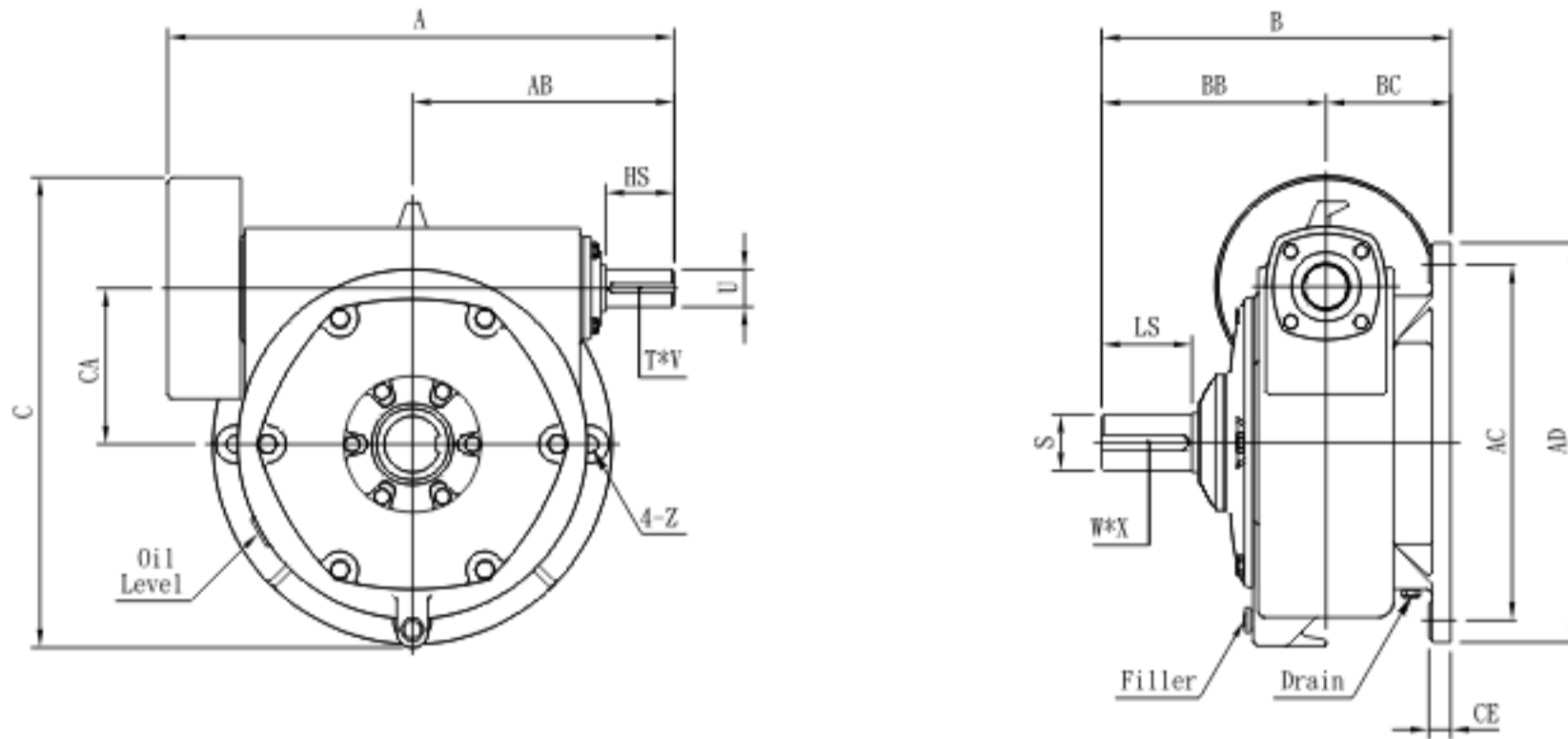
### Shaft Direction



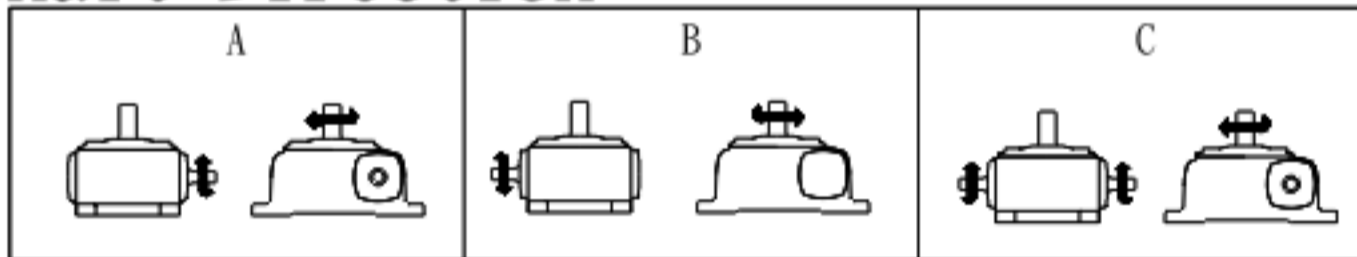
Unit:mm

Size	Ratio	A	AB	AC	AD	B	BB	BC	CA	CB	CC	CD	CE	Z
40	1/10	140	83	70	95	120	78	42	40	65	85	180	14	9
50		179	107	90	118	145	95	50	50	93	102	220	18	11
60	1/15	201	124	100	126	165	110	55	60	105	120	260	20	11
70	1/20	235	140	120	156	195	130	65	70	120	135	295	20	15
80	1/30	265	160	140	176	213	140	73	80	130	150	320	20	15
100		328	192	190	226	260	170	90	100	155	180	375	30	15
120	1/40	389	230	220	268	290	190	100	120	185	215	450	30	18
135	1/50	430	260	260	295	320	210	110	135	210	235	495	35	18
155		479	286	290	336	382	242	140	155	145	265	456	30	20
175	1/60	515	308	320	376	398	248	150	175	167	293	516	35	20

Size	Input Shaft			Output Shaft			Ojm (l)	Weight (kg)
	HS	U	T * V	LS	S	W * X		
40	25	12	4 * 2.5	35	16	5 * 3	0.2	4.1
50	30	12	4 * 2.5	40	17	5 * 3	0.4	6.5
60	40	15	5 * 3	50	22	7 * 4	0.6	9
70	40	18	5 * 3	60	28	7 * 4	1.1	13
80	50	22	7 * 4	65	32	10 * 4.5	1.5	18
100	50	25	7 * 4	75	38	10 * 4.5	3.0	42
120	65	30	7 * 4	85	45	12 * 4.5	5.0	66
135	75	35	10 * 4.5	95	55	15 * 5	7.5	90
155	85	40	10 * 4.5	100	60	15 * 5	9.2	115
175	85	45	12 * 4.5	110	65	18 * 6	10.5	155



### Shaft Direction



Unit:mm

Size	Ratio	A	AB	AC	AD	B	BB	BC	C	CA	CE	Z
200	1/10 1/40	698	357	450	510	495	305	190	643	200	30	22
225	1/15	709	361	510	580	545	345	200	700	225	35	27
250	1/20	813	420	570	640	560	360	200	754	250	35	27
300	1/30 1/60	943	495	660	750	645	410	235	853	300	42	36

Size	Input Shaft			Output Shaft			Ojm (l)	Weight (kg)
	HS	U	T * V	LS	S	W * X		
200	95	50	12 * 4.5	125	70	20 * 7	12	220
225	95	55	15 * 5	140	80	20 * 7	17	315
250	110	60	15 * 5	145	90	24 * 8	23	365
300	125	70	18 * 6	170	95	24 * 8	45	520